
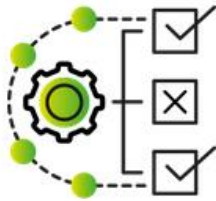


# Supercharge Power BI with Planning & Writeback

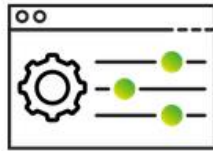
Bring real-time collaborative data-collection, forecasting, commenting, and what-if scenario modeling to your enterprise client's Power BI  solutions.

Deliver measurable ROI and long-term value by bringing Planning & Writeback to Power BI with our proven tool set.



## Enterprise Success

55% of Fortune-100 with Power BI choose to use Power ON for planning across S&OP and FP&A.



## Incredible Support

On-demand training and hands-on support help your team quickly ramp-up and stay in-the-know.

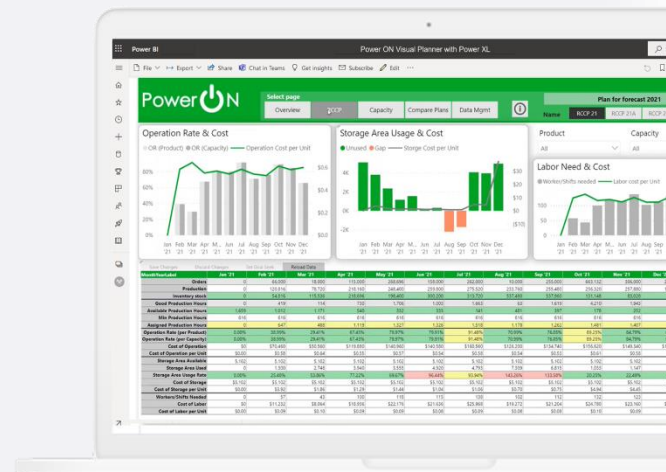


## 90% Renewal Rate

Power ON + Power Planner BI creates lasting value for your customers across use-cases and divisions.

## Why Planning & Write-back in Power BI?

- Because to compete in today's world you need to connect Analysis with Decisions and Action
- That means Analysis must be more than read-only dashboards, drilldown, and 'export to spreadsheets'
- It means enabling people to Analyze, enter Plans and Models, even Manage Data, all in the same place
- Adding Power ON to your Power BI, you can do just that

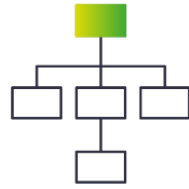


**With Power ON you can go beyond Analysis in Power BI to...**



**Analyze & Model**

Take analysis to the next level. "What-if we cut costs/sold more?"  
No more export to spreadsheet required!  
Analysis plus what-if scenario planning, all unified in one place.



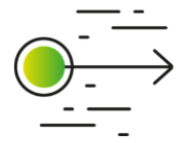
**Build & Plan**

Assemble data for planning, generate scenarios, and enable writeback. Add Drivers, KPIs, and Approval Workflow to streamline all your critical data collection processes.



**Share & Collaborate**

Connect decision makers org-wide to Analyze and Plan in Power BI, using Excel-like features they already know. Leverage security & multi-user models to collaborate with confidence.



**Decide & Act**

Take action in Power BI, right where you analyze, model, plan, and collaborate. You'll bring decisions to life faster that maximize impact and drive real results.

**The Power ON toolset includes...**



**Visual Planner**

- Scenario Planning
- Commentary on data points
- Master Data Management
- Prediction (AI / M:L)
- Workflow/Approval



**Power XL**

- Matrix: Client-side Pivot settings
- Table: Copy/paste, sort/filter, etc...
- Forms: Create as easily as in Excel
- Report: Excel-like design/format
- All Excel features (not VBA)



**Visual Modeler**

- Advanced Modeling (DR/CR, FX)
- Setup Parent/Child Hierarchies
- Deploy XMLA or AAS
- User Security
- Data Input in Excel or Power BI

**About Power ON**

Power ON was founded on the idea that Business intelligence (BI) should be a Two-way Street. That Power BI and Power Pivot are the foundation for real-time, interactive, collaborative, and self-service BI + Planning across the Enterprise